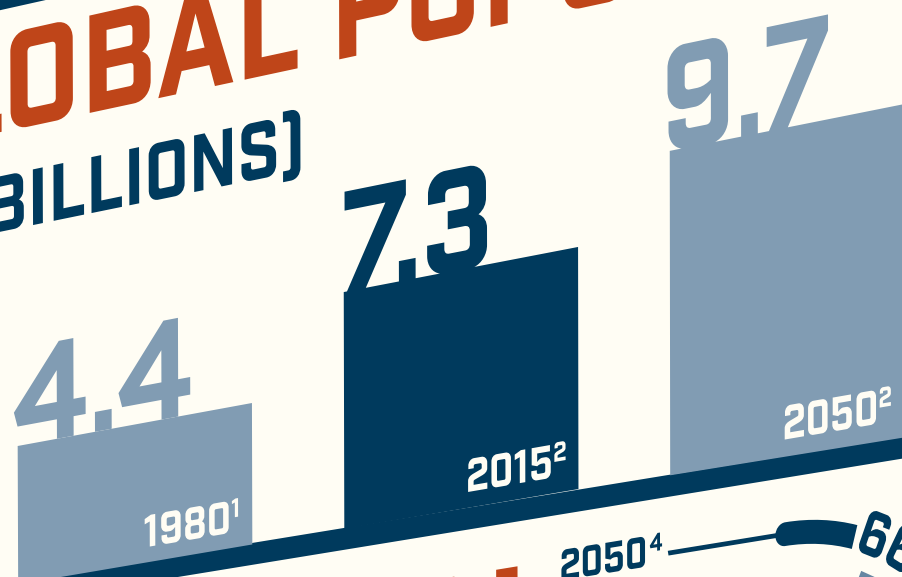


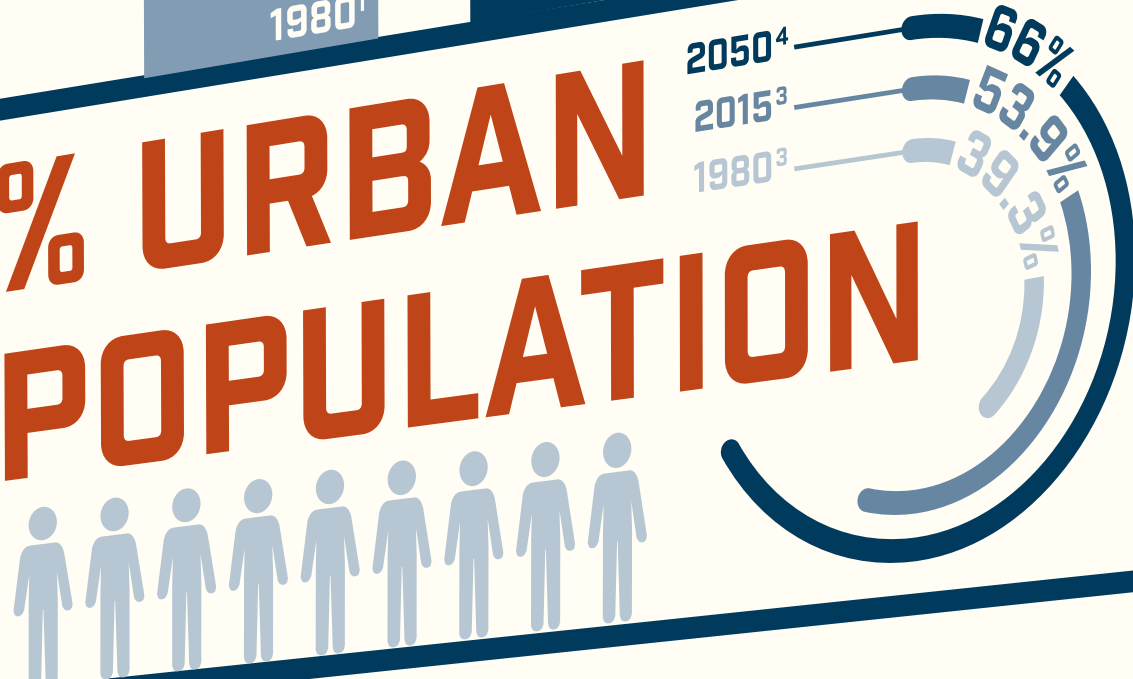
# GROWING UP WITH ELEVATORS & ESCALATORS

Just as the urban spaces we live in today have changed dramatically in the past thirty years the cities of tomorrow will look very different than the cities of today. Buildings are rising taller than ever to accommodate growing urban populations.

## GLOBAL POPULATION (IN BILLIONS)



## % URBAN POPULATION



## NUMBER OF SKYSCRAPERS GLOBALLY (BUILDINGS 200M+)



National Elevator Industry, Inc.  
5667 Stone Road | #265 | Centreville, VA 20120  
www.neii.org | info@neii.org  
NEII and NEII logo - Registered, U.S. Patent and Trademark Office.  
Copyright © 2016 NEII

Sources:

- <sup>1</sup> <http://ctbuh.org/Publications/Journal/InNumbers/TallUrban/tabid/2160/language/en-US/Default.aspx>
- <sup>2</sup> <http://www.un.org/en/development/desa/news/population/urban/2015-report.html>
- <sup>3</sup> [http://www.who.int/gho/urban\\_health/situation\\_trends/urban\\_population\\_growth/en/](http://www.who.int/gho/urban_health/situation_trends/urban_population_growth/en/)
- <sup>4</sup> <https://esa.un.org/unpd/wup/Publications/Files/WUP2014-Highlights.pdf>
- <sup>5</sup> <http://www.skyscrapercenter.com/year-in-review/2015>

Mobility technologies like elevators and escalators are enabling this vertical growth, and safe ridership is crucial in an environment that's growing up, faster than ever.



IF AN ELEVATOR STALLS, STAY PUT—WAIT FOR QUALIFIED HELP TO ARRIVE



IF THE CAR IS FULL DON'T JOIN THE CROWD, WAIT FOR THE NEXT CAR



ALWAYS HAVE ONE HAND AVAILABLE TO HOLD THE HANDRAIL



NEVER TAKE STROLLERS OR SIMILAR ITEMS ON THE ESCALATOR—USE AN ELEVATOR



DO NOT SIT ON STEPS OR STAND TOO CLOSE TO SIDES



STAND CLEAR OF THE DOORS AND BE CONSIDERATE OF OTHER PASSENGERS ENTERING AND EXITING

